

# DELUXE INFINITY RANGE

MODULAR DESKING CATALOGUE



# DELUXE INFINITY RANGE

## Modular Desking

### Single Sided Desk

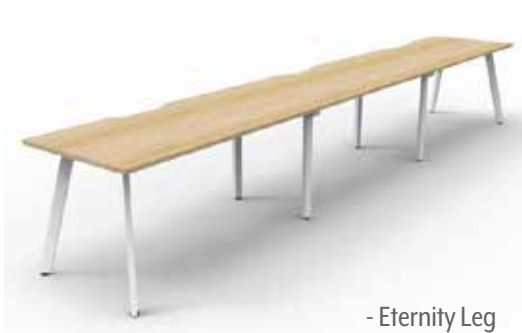
- Use as a single stand alone desk
- Create rows of connecting desks



- Profile Leg



- Loop Leg



- Eternity Leg

### Single Sided Desk *with Screen*

- Pinnable fabric screen
- Adds privacy and some noise reduction
- Additional centre screens available



- Loop Leg



- Eternity Leg

### Double Sided Desk

- Encourage collaboration
- Cable entry gap between desks



- Eternity Leg



- Loop Leg



- Profile Leg



# DELUXE INFINITY RANGE

## Corner Workstations

### Double Sided Desk with Screen

- Back to back desking with privacy screens
- Space efficient system
- Additional dividing screens available



- Profile Leg



- Eternity Leg

### Single Corner Workstation

- Use as single corner workstation
- Tops with single cable entry hole



- Profile Leg



- Loop Leg



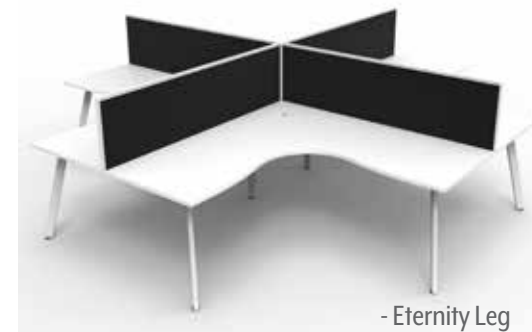
- Eternity Leg

### 4-Person Corner Workstation

- Pinnable fabric screen for privacy
- Space efficient system
- Additional screen accessories available



- Loop Leg



- Eternity Leg



# DELUXE INFINITY – TOP OPTIONS

E0 Melamine board tops

## Standard Top

- Comes with a scalloped edge for cable access
- Available in 3 sizes
  - 1200mm W x 750mm D x 25mm Thick
  - 1500mm W x 750mm D x 25mm Thick
  - 1800mm W x 750mm D x 25mm Thick
- Available in 2 colours
  - Natural Oak
  - Natural White



## Corner Top

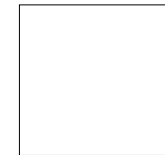
- Comes with a cable entry hole
- Available in 4 sizes
  - 1800mm x 1200mm W x 750mm D x 25mm Thick
  - 1800mm x 1500mm W x 750mm D x 25mm Thick
  - 1800mm x 1800mm W x 750mm D x 25mm Thick
  - 1500mm x 1500mm W x 750mm D x 25mm Thick
- Available in 2 colours
  - Natural Oak
  - Natural White



## Finish Options



• Natural Oak



• Natural White

# DELUXE INFINITY – LEG OPTIONS

Powdercoat Steel Frame

## Profile Leg

- Straight 60mm x 30mm Profile
- Adjustable feet
- Available in 2 colours
  - Black Powdercoat
  - White Powdercoat



## Loop Leg

- Bevelled 60mm x 45mm Profile
- Adjustable feet
- Available in 2 colours
  - Black Powdercoat
  - White Powdercoat

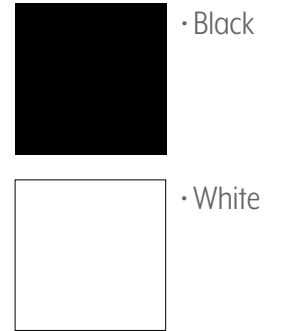


## Eternity Leg

- 45 Degree Profile
- Adjustable feet
- Available in 2 colours
  - Black Powdercoat
  - White Powdercoat



## Finish Options



# DELUXE INFINITY – SCREENS

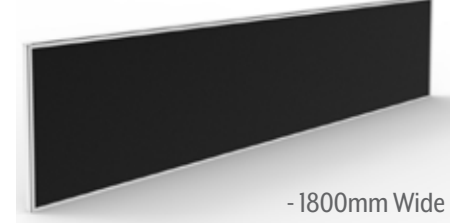
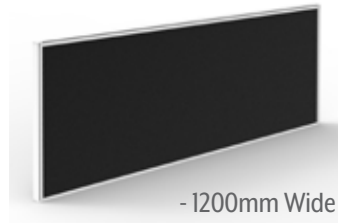
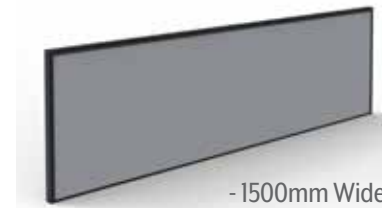
## Dividing Screen

- 690mm W x 350mm H x 20mm Thick
- 370mm H when used with screen clamps
- Fixing clamps included

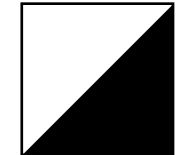



## Infinity Screen

- 500mm H x 30mm Thick
- Available in 4 widths
- \*Fixing plates not included



## Finish Options

-  • Black fabric with White fixings
-  • Grey fabric with Black fixings

# DELUXE INFINITY – SHELVING

## Desk Mounted

- 600mm W x 300mm D x 450mm H Overall
- Desk top to underneath of shelf = 208mm
- 25mm Thick E0 Rated Enviroboard Shelf
- 4 x Wire dividers included



## Screen Hung

- 600mm W x 270mm D x 250mm H
- 18mm Thick E0 Rated Enviroboard Shelf
- Powdercoated steel brackets included



## Finish Options



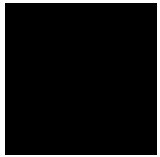
- Natural Oak shelf with Black frame



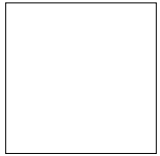
- Natural White shelf with White frame

# DELUXE INFINITY – ACCESSORIES

## Finish Options



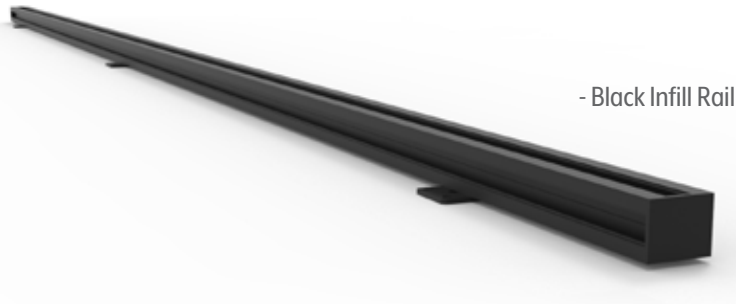
• Black



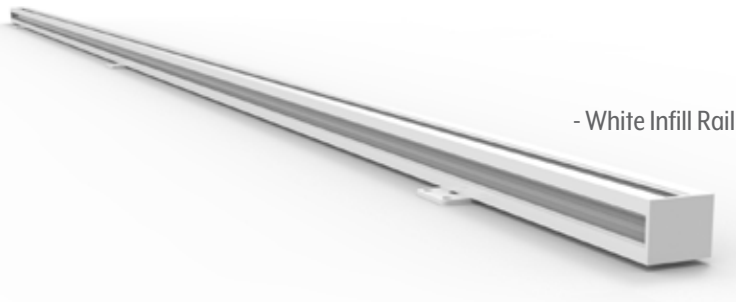
• White

## Infill Rails

- Use with back to back, double sided workstations to cover cable entry gap
- 30mm x 30mm Profile
- Available in 3 sizes to suit desks
  - 1200mm W
  - 1500mm W
  - 1800mm W



- Black Infill Rail



- White Infill Rail

## 600mm Deep Legs

- Use as a return leg for desk & returns
- Use where recessed legs are required
- \*Smaller 600mm Deep desk tops not stocked. Order locally made.



- 600mm Profile Leg



- 600mm Loop Leg



- 600mm Eternity Leg



## Rail Clamp

- Used for corner workstations





# DELUXE INFINITY – COMPONENTS

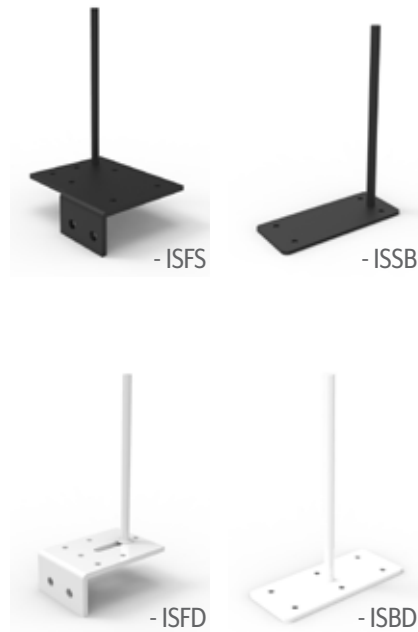
## Joining Pole

- Use where screens join at 90 degrees
- Most used for corner pods
- Also used for return screens between users



## Fixing Plate

- Used to fix infinity screens to infinity frames
- ISFS for single sided desks
- ISFD for double sided desks
- ISSB for single side returns
- ISBD between two users



## Intermediate Legs

- Recessed legs
- Used between 2 or more joining workstations
- D-ISL for single sided desks
- D-IDL for double sided desks



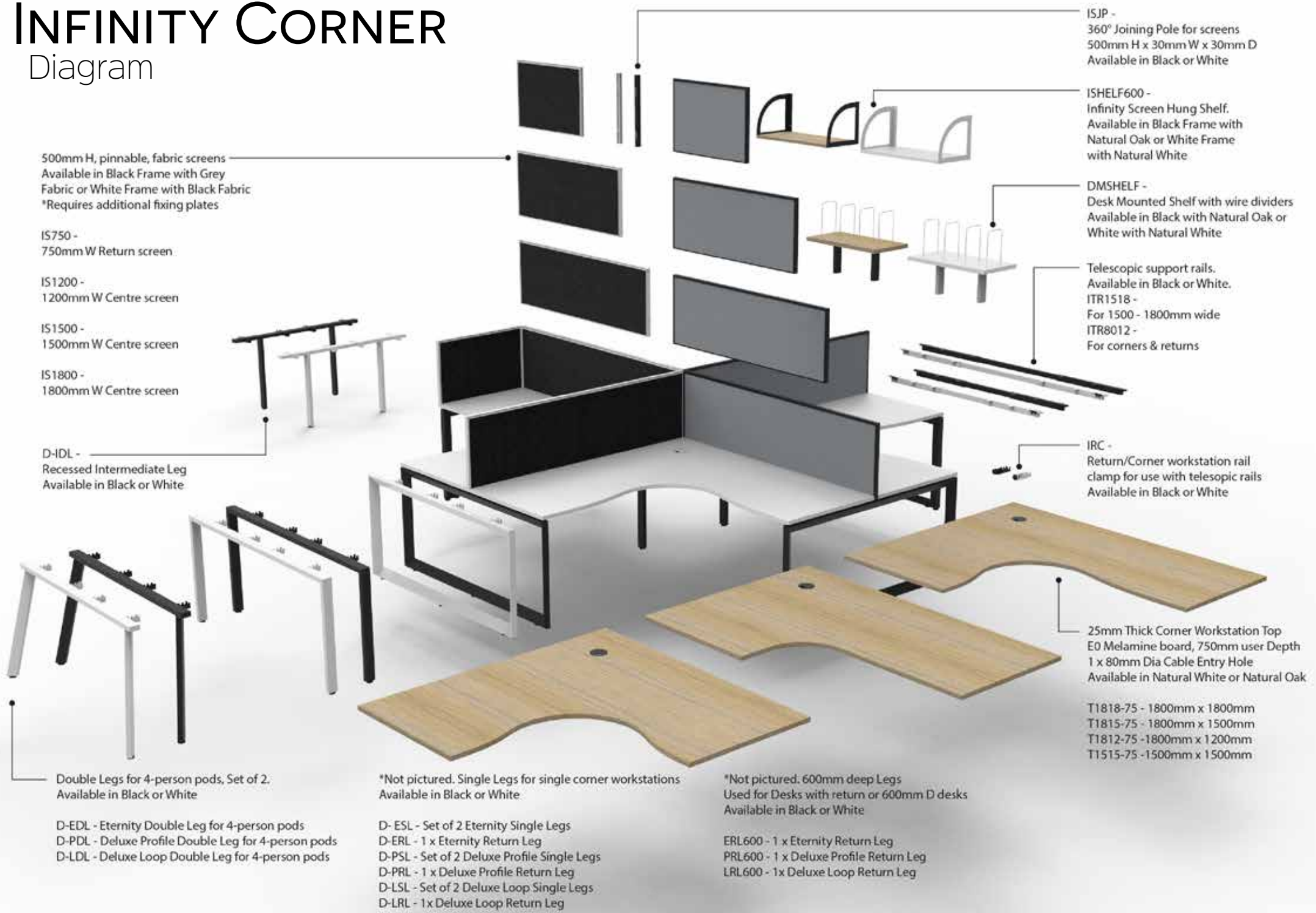
## Double Support Rails

- Used to strengthen desk tops
- Telescopic rails for 2100mm and under
- ITR1012 for 1200mm W tops
- ITR1518 for 1500 & 1800mm W tops
- ITR1821 for 1800-2100mm W tops
- ITR7011 for Corner workstations
- FR2400 fixed rails for 2400mm W tops



# INFINITY CORNER

## Diagram



500mm H, pinnable, fabric screens  
Available in Black Frame with Grey Fabric or White Frame with Black Fabric  
\*Requires additional fixing plates

IS750 -  
750mm W Return screen

IS1200 -  
1200mm W Centre screen

IS1500 -  
1500mm W Centre screen

IS1800 -  
1800mm W Centre screen

D-IDL -  
Recessed Intermediate Leg  
Available in Black or White

Double Legs for 4-person pods, Set of 2.  
Available in Black or White

D-EDL - Eternity Double Leg for 4-person pods  
D-PDL - Deluxe Profile Double Leg for 4-person pods  
D-LDL - Deluxe Loop Double Leg for 4-person pods

\*Not pictured. Single Legs for single corner workstations  
Available in Black or White

D-ESL - Set of 2 Eternity Single Legs  
D-ERL - 1 x Eternity Return Leg  
D-PSL - Set of 2 Deluxe Profile Single Legs  
D-PRL - 1 x Deluxe Profile Return Leg  
D-LSL - Set of 2 Deluxe Loop Single Legs  
D-LRL - 1 x Deluxe Loop Return Leg

\*Not pictured. 600mm deep Legs  
Used for Desks with return or 600mm D desks  
Available in Black or White

ERL600 - 1 x Eternity Return Leg  
PRL600 - 1 x Deluxe Profile Return Leg  
LRL600 - 1 x Deluxe Loop Return Leg

ISJP -  
360° Joining Pole for screens  
500mm H x 30mm W x 30mm D  
Available in Black or White

ISHELF600 -  
Infinity Screen Hung Shelf.  
Available in Black Frame with Natural Oak or White Frame with Natural White

DMSHELF -  
Desk Mounted Shelf with wire dividers  
Available in Black with Natural Oak or White with Natural White

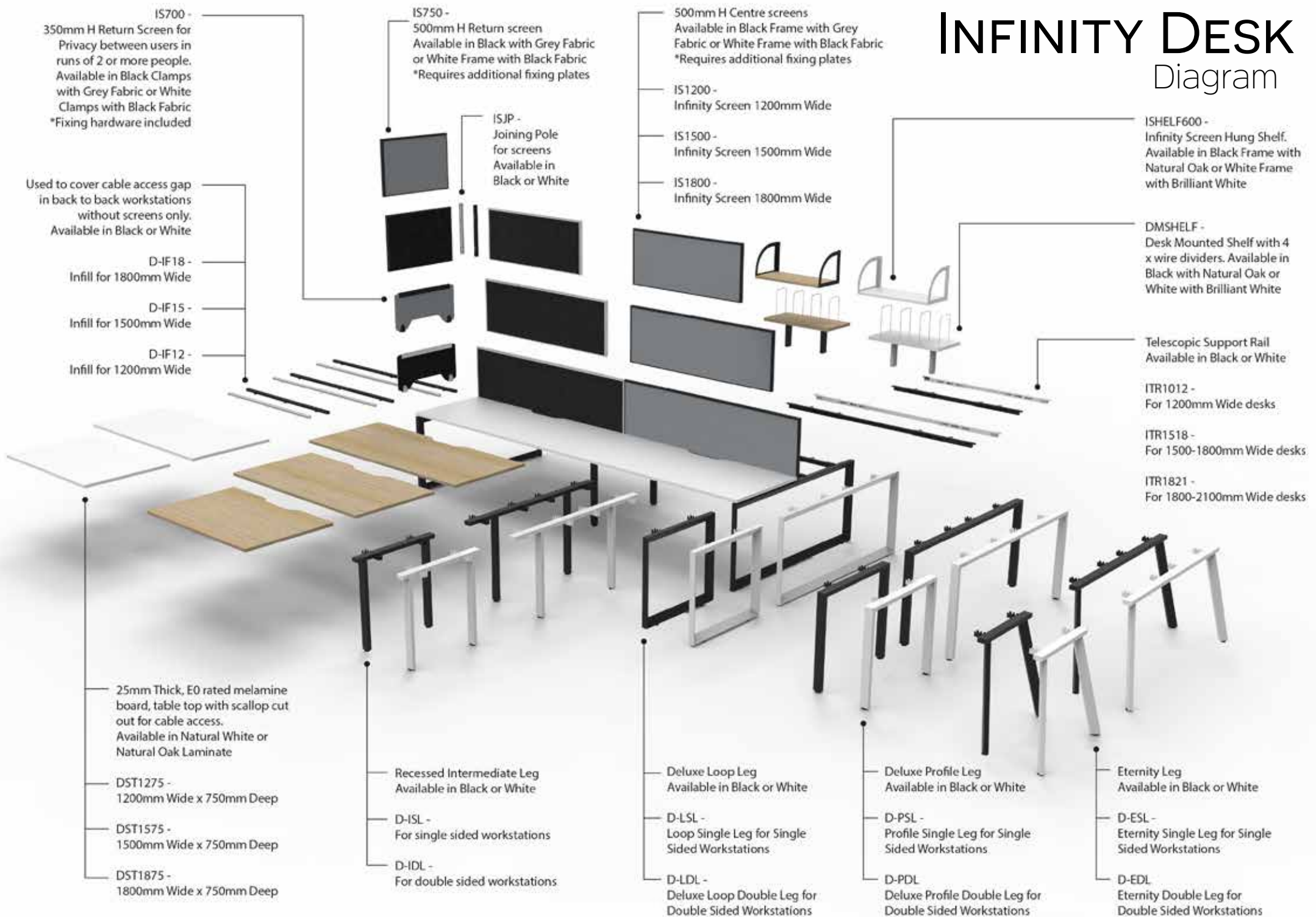
Telescopic support rails.  
Available in Black or White.  
ITR1518 -  
For 1500 - 1800mm wide  
ITR8012 -  
For corners & returns

IRC -  
Return/Corner workstation rail clamp for use with telescopic rails  
Available in Black or White

25mm Thick Corner Workstation Top  
E0 Melamine board, 750mm user Depth  
1 x 80mm Dia Cable Entry Hole  
Available in Natural White or Natural Oak

T1818-75 - 1800mm x 1800mm  
T1815-75 - 1800mm x 1500mm  
T1812-75 - 1800mm x 1200mm  
T1515-75 - 1500mm x 1500mm

# INFINITY DESK Diagram







**WORKSTATIONS - FURNITURE - SEATING - STORAGE - ACCESSORIES**